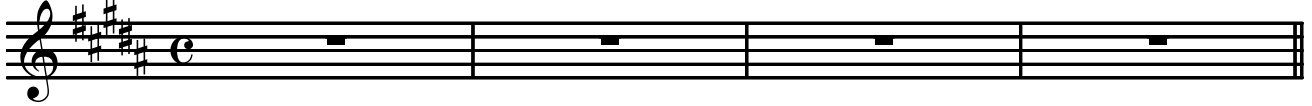


Lamb of God

Shawn Carter

♩ = 60

INTRO E M9(#11)



5 E M9(#11) G#m7/E E M9(#11)

Lamb of God You take a - way the sins of the world.

8 F# G#m9 E M9(#11)

Have mer - cy on us.

12 E M9(#11) G#m7/E E M9(#11)

Lamb of God You take a - way the sins of the world.

15 F# G#m9 E M9(#11)

Have mer - cy on us.

19 E M9(#11) G#m7/E E M9(#11) F# G#m7 E M9(#11)

Lamb of God You take a-way the sins of the world. Grant us peace.